



# Mount Litera Zee School

Great School. Great Future  
**UNNAO**



📍 22 Km Milestone, Kanpur-Lucknow Highway  
🌐 [www.zeeschoolunnao.com](http://www.zeeschoolunnao.com) 📞 9792941222

Affiliated To CBSE New Delhi  
Affiliation No. 2131619





**Mrs. Deepmala Singh**  
Principal

MLZS, Unnao is an establishment which provides a platform of excellence in all spheres of education, co-curricular and protectively ensures to generate true citizens. Since the inception of school and under the aegis and guidance of the Head of institution we have covered many milestones and have had a long and eventful journey.

I would like to share with my students a few lines to be quoted by Swami Vivekanand for a value based and career oriented education.

'We want the education by which character is formed, strength of mind is increased, the intellect is expanded, and by which one can stand on one's own feet.'

Every child is a fountainhead of potential who can shoulder the responsibility and have courage to be instruments of change to transform into a true and literate citizen. I look forward to take MLZS Unnao to heights with the message for my children-

'The purpose of life is to live it,  
To taste experience to the utmost,  
To reach out eagerly and without fear  
for newer and richer experience.'



**Mrs. Neena Verma**  
Chairperson

**MOUNT LITERA** as the name implies in itself " The Mountain of Education" To reach the peak of success. Education is the only key to unlock the unique infinite potential within each child. It is a continuous and step by step process maintaining balance between knowledge, skills and values. This healthy balance lies at the core of all our scholastic and co scholastic planing. The prioritization of discipline and the emphasis on academics provides the skills that 21st Century adults will need and the values and habits that will bring them opportunities for transformational leadership.

The curriculum is based on most advanced methods of teaching, methods interdisciplinary project based and research driven. It also incorporates higher order thinking skills, multiple intelligence, technology and multimedia.

we believe in harnessing the individual creativity, curiosity and aesthetic potential of each child. Keeping this in mind the children are nurtured and trained all the while keeping track of individual freedoms in an abuse free environment, driven by always doing what is right for the child. This enables them to survive and thrive in tomorrow's world.

Trust in taking the first step when you do not see the whole staircase. Let us together take the first step to lead our children to the peaks of success.



## OUR BELIEF SYSTEM

### **Children are not just Roll Numbers, they are unique individuals.**

Each child has a unique brain network that shapes how he/she absorbs and response to stimuli. One way of teaching does not work for every child. We need to teach the way they learn, not force them to learn the way we teach.

### **Every child is talented. Schools just need to figure where that talent lies.**

Schooling is a time when the child discovers what he/she is good at. We should not make it an experience of finding out whether he/she is any good.

### **A School's role is to develop whole individual, not just complete the syllabus.**

School is not an assembly line of syllabus and exams. Schools help children make meaning of life and develop the muscle to lead life effectively. For this, schools have to expand beyond academics to include life skills, values and habits.

### **Holistic development needs partnership between School and Parents.**

School need to enroll and educate parents so that the child gets seamless environment between school and home, which is conducive to his/her development.

### **Schools need and integrated approach centred on the child.**

School need to begin with a vision of the child they aim to graduate and then designs everything around that vision. Building design, pedagogy, teachers, curriculum, content, activities and examinations - all need to be integrated to achieve this vision.

## ABOUT ZEE SCHOOLS

Mount Litera Zee School is an endeavor by the Essel Group led by Shri Subhash Chandra to prepare leaders of the 21st century through its education arm, Zee Learn Limited.

Brain Science and Human Development Research confirms that school years play a defining role in our "Sense of Self" and our "View of Life". To fulfill our vision of improving human capital of India, it was imperative that we bring innovation in schooling. Mount Litera Zee School has been our endeavor in this direction.

### **ABOUT MOUNT LITERA ZEE SCHOOL, UNNAO.**

#### **CAMPUS**

Zee School is situated on Kanpur-Lucknow highway (just 10 km away from Kanpur and 2 km from Unnao). The well-secured lush green campus provides the most suitable environment for concentration, growth and development. School has an impressive and pollution-free campus with panoramic green surroundings, elegant landscaping and beautiful flowerbeds. The campus has a great balance between sports and academics. It has a well setup for all major sports and other physical activities for physical growth of a child. Also, it has a great setup for academic growth of a child.

The location of the campus is the biggest advantage as it takes you away from the chaotic city life which help not only children but also teachers to perform well and give their hundred percent.





## SMART CLASS ROOMS

**First School of Unnao to partner with BYJU'S.**

SMART Classroom offers collaborative learning components for both teachers and students, and it helps you engage students with interactive content. Smart classrooms are well equipped with computer and audiovisual equipment, allowing the teacher to teach using a wide variety of media. Smart class is equipped with Windows XP Enabled computer, IWB Board (Interactive White Board) and LCD Projector.



## COMPUTER CENTER

The school has a full-fledged computer center with strong Internet access. Each computer is installed with genuine copy of software that is required for the study. The computer center is designed in such a way that each and every student has an individual computer to work on.



## ART AND CRAFT

Arts and crafts teach children to learn in different ways and approach problems and challenges creatively. That is the reason Zee School has a dedicated Art and Craft room.



Activities in art and craft room helps a child to push up his creativity and think something new.

## LIBRARY

Library provides a quiet study space for students on campus. Children's libraries are special collections of books intended for juvenile readers. The library has approx 1500 books which comprises Fictions, Historical, Adventurous, Encyclopedias, Mythological books etc.



## GAMES

### Indoor Games

The school has all major indoor games facility. Games include Table tennis, carom, chess etc.

### Outdoor games

The school has all major outdoor games facility. Games include Cricket, Basket Ball, Foot Ball, Badminton etc..



## Drinking Water

We take health of each member of our school on very serious priority. Since water is generally responsible for most of the diseases, hence we have taken all measures to provide clean drinking water. Every drinking water tap is fitted with RO system to provide best drinking water.



## TRANSPORTATION

The school provides all kind of transport which connects all parts of the Kanpur city and Unnao to our school at a very nominal charges.



## MEDICAL ROOM

Medical room of the school is well equipped with the required medical equipments. Periodical medical check-up is conducted of all the students. In case of any sudden illness or accident, First Aid is provided in the Medical Room of the school. In case of an emergency the child is taken to the nearest Hospital/ Nursing Home for treatment and parents are immediately informed.



## EXTRA CURRICULAR ACTIVITY

Extra-curricular activities give children the opportunity to develop their skills in various areas for the all r o u n d development of personality. We believe that



healthy body has a healthy mind. Keeping this in our mind school engages students in all kinds of extra activities apart from academics. Activities include Yoga, Physical Training, Adventure Sports, Trekking, Music & Dance etc.

## EDUCATION THROUGH FIELD VISIT

Education is not confined to classroom only. The school organises field trips from time to time, so that the children can become more observant and learn practically.



## LITERA KIT

Litera kit is a unique combination of learning resource and the worksheets. It facilitate children to reduce the size and weight of their school bags. Also, it gives freedom of learning and practicing together. The curriculum designed by the Zee learn ltd is rated to be one of the best curriculum in the country to train, educate and prepare the young generation to face all challenges successfully they will come across in all walks of their life and career in coming years.

The curriculum is one of the best as it combines effective classroom strategies and specially designed e-content which help students to develop contructivism, multiple intelligence and higher order thinking skills.



## The Pre-Primary Programme

Focus on the child's progress

Assessment is continuous

No Grade or Marks.. No Comparison



The integrated method is holistic and child centred with no compartmentalization of subjects. It seeks to give a complete experience to the child within the child range of experiences and understanding. This approach goes a long way towards shaping a wholesome and healthy personality and gets a child prepared for primary school.

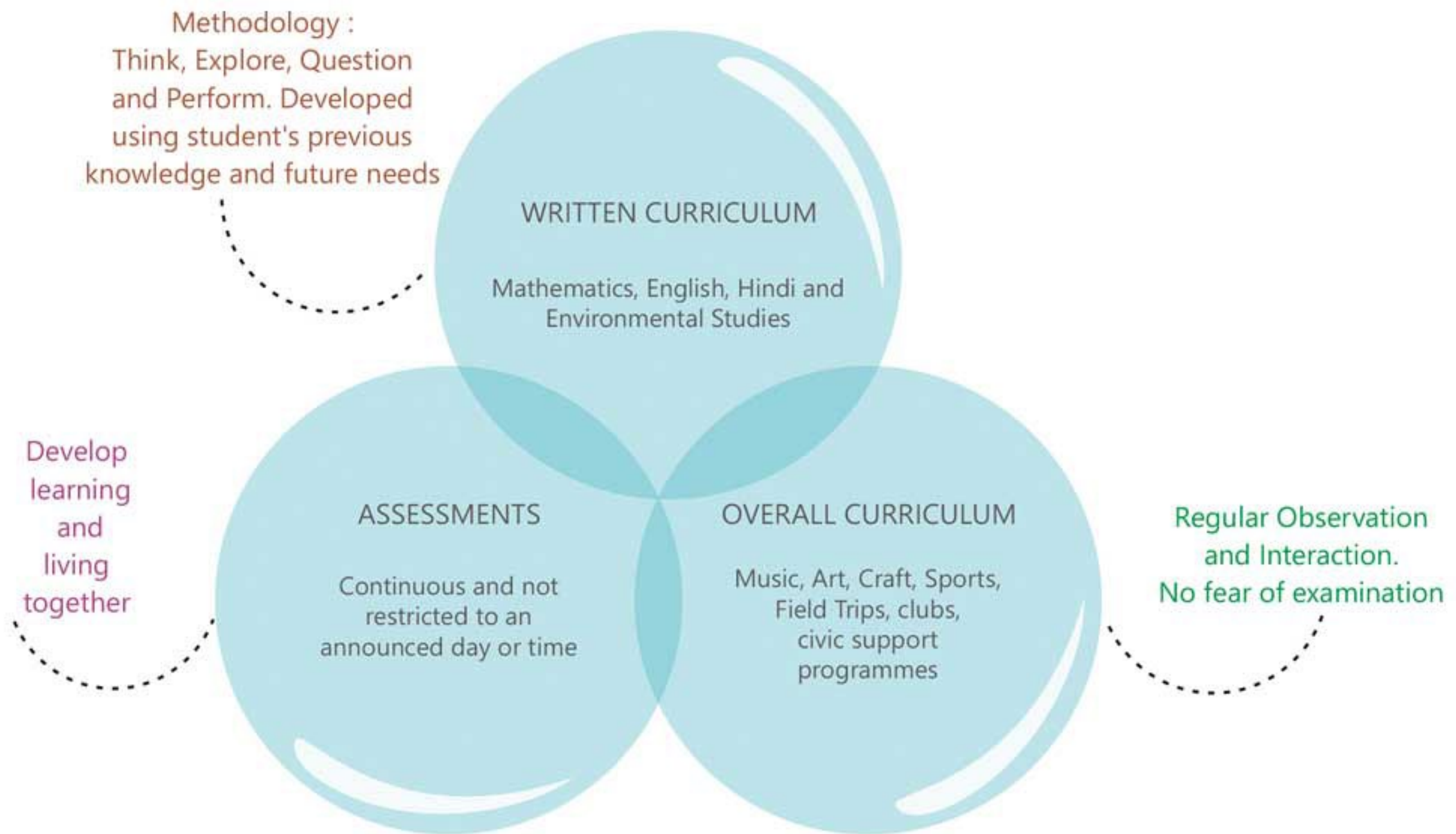


## The Primary School Programme : Classes I-V

Learning happens best when it is connected to the real world we live in.

The main objective at this stage is preparing the learner's foundation and readying him/her to take on the responsibility of being an active participant in the learning process.

The Primary School Program focusses on the child's unique potential both inside and outside the classroom and is delivered using the Litera Octave Approach.



Teachers create all learning experiences covering a range of learning needs. By the time a child moves from the Primary School Program to the Middle School Program he/she will have 'learnt to learn'



Relate learning to real life situations.  
Develop logical and critical thinking  
through exercises, questions, debates  
and activities

### WRITTEN CURRICULUM

English, Hindi, Mathematics,  
Science, Social Science

The learner here is equipped with 'learning skills' and is ready  
to move on to the Secondary School Program.

Develop skill of problem  
solving, Finance management,  
Media literacy, Entrepreneurship,  
Self management

### ASSESSMENTS

Projects, Presentations  
as group work and  
individual assessments.  
Scheduled tests and  
continuous assessment

### OVERALL CURRICULUM

Sports, Field Trips,  
Participation in clubs  
and societies,  
organisation of events,  
Fairs, Responsibility to  
the Environment

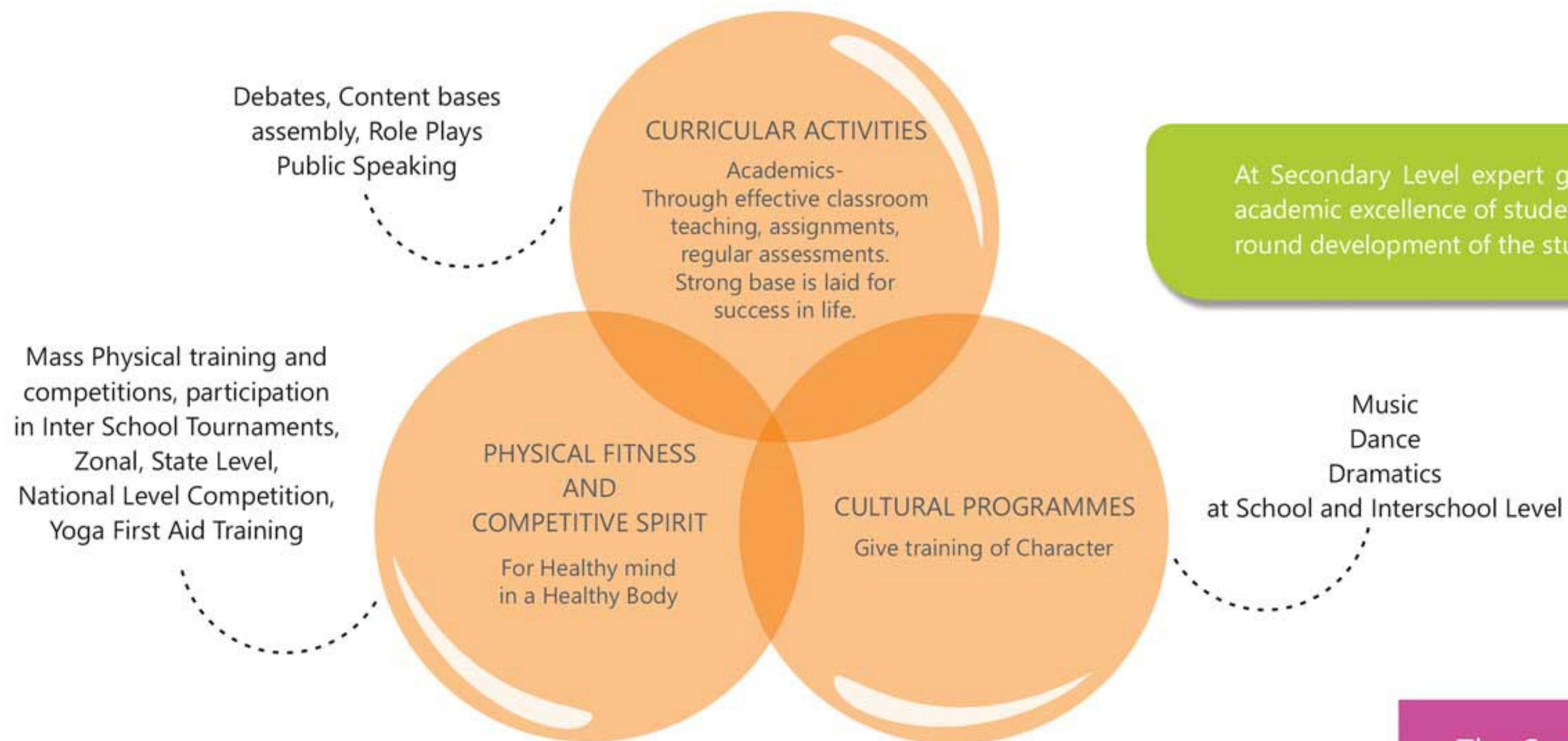
## The Middle School Programme : Classes VI-VIII

At this age, children, are in a stage of intellectual and social development and the learner begins to connect herself with the community in a larger sense. An integrated package of teaching, learning and assessment is delivered through the Litera Octave approach, the child is directed towards independent learning and is guided to take on more responsibility.

The main objective of this stage is to help the children make connections, between the meaningful experience in life and the courses of study.







## The Secondary School Programme Classes IX-X

At this age, children, are in a stage of logical, critical thinking and emotional development. The children often fly under the radar with the support of school and teachers. The main objective of this stage is to give shape to the potential strength of the students and evaluate its effectiveness over time.



## Senior Secondary School Programme Classes XI-XII

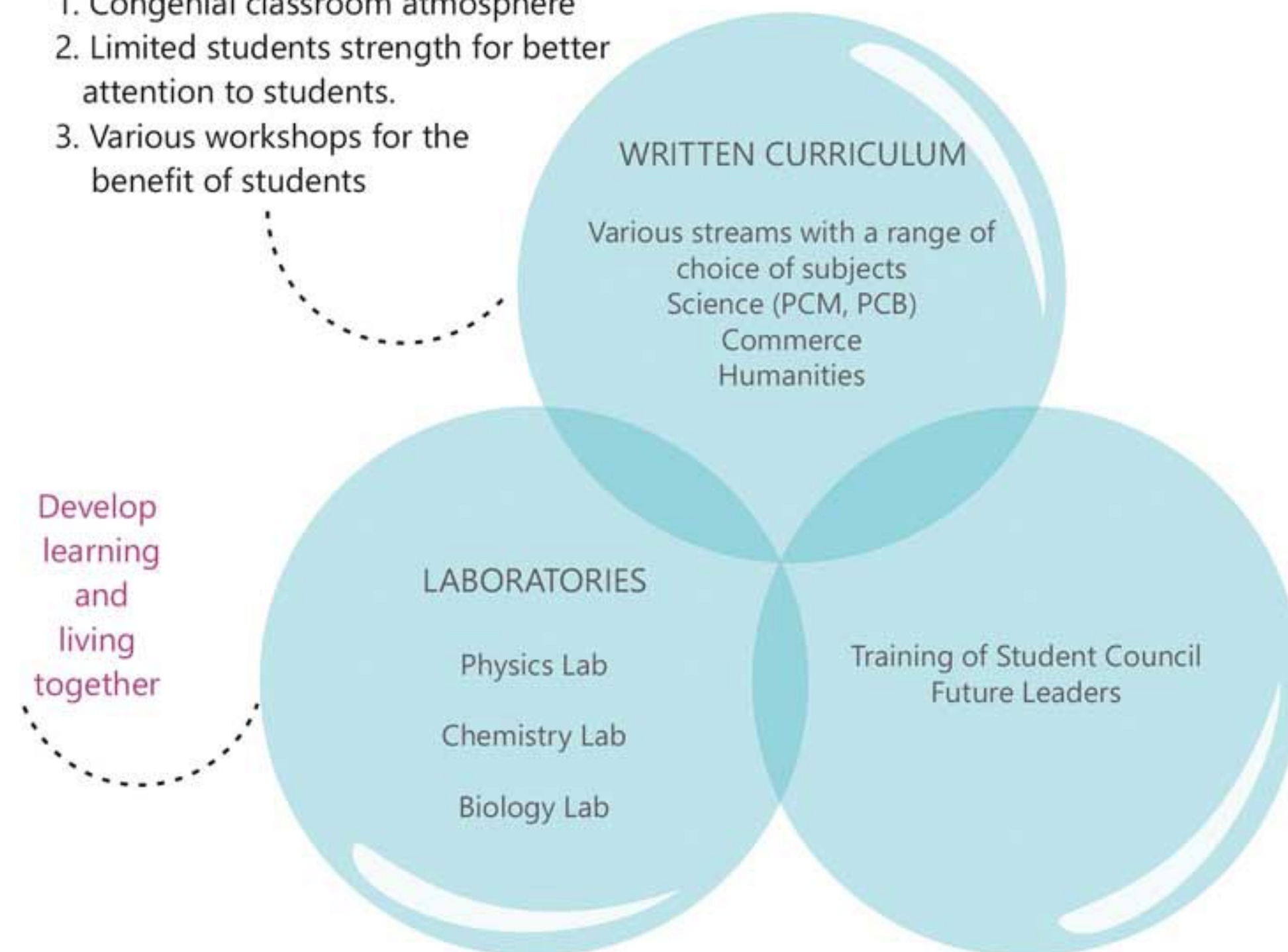
At this age, children, are in a stage of innovative and experimental spirit. A holistic view of teaching, creativity and physical and technical skills are given to them for exploring the new world.

The main objective at this stage is to train the students for controlled behavior. It becomes essential to improve their analytical approach for specific skills for venturing into competitive world with confidence.



1. Congenial classroom atmosphere
2. Limited students strength for better attention to students.
3. Various workshops for the benefit of students

Develop  
learning  
and  
living  
together



With the intention of complete education at one place school provides senior secondary education with multifarious educational plan for preparing successful leaders/professionals of tomorrow.



## ACHIEVEMENTS SO FAR (CO-CURRICULAR)

**NATIONAL WINNERS**  
IN GROUP DANCE  
(ZEE OLYMPIAD)

**YOGA**  
CHAMPIONS

**INTER SCHOOL**  
**COMPETITION**  
**WINNER**

**EPOCH-WINNER**  
AT STATE LEVEL

**BRAIN O BRAIN**  
**STATE LEVEL**  
**ACHIEVEMENT**

### Entry Criteria for Admission

1. Admission to be granted to students on the basis of assessments that gauge student profile and check the goodness of fit into Mount Litera system.
2. Student viva to be considered only as an interface till class VII. It has no weight in the final selection list.
3. Concept test shall be based on expected key knowledge for every class.
4. Observation and viva will be conducted in person.
5. Student of Mount Litera Zee School will not have any further entrance test or assessment while taking transfer to any other Mount Litera Zee School of the country





### PRE-PRIMARY



**“We love  
our  
School”**

### PRIMARY



**“Learning  
is  
Fun”**

**STUDENTS!  
SPEAK**

### SENIOR SECTION



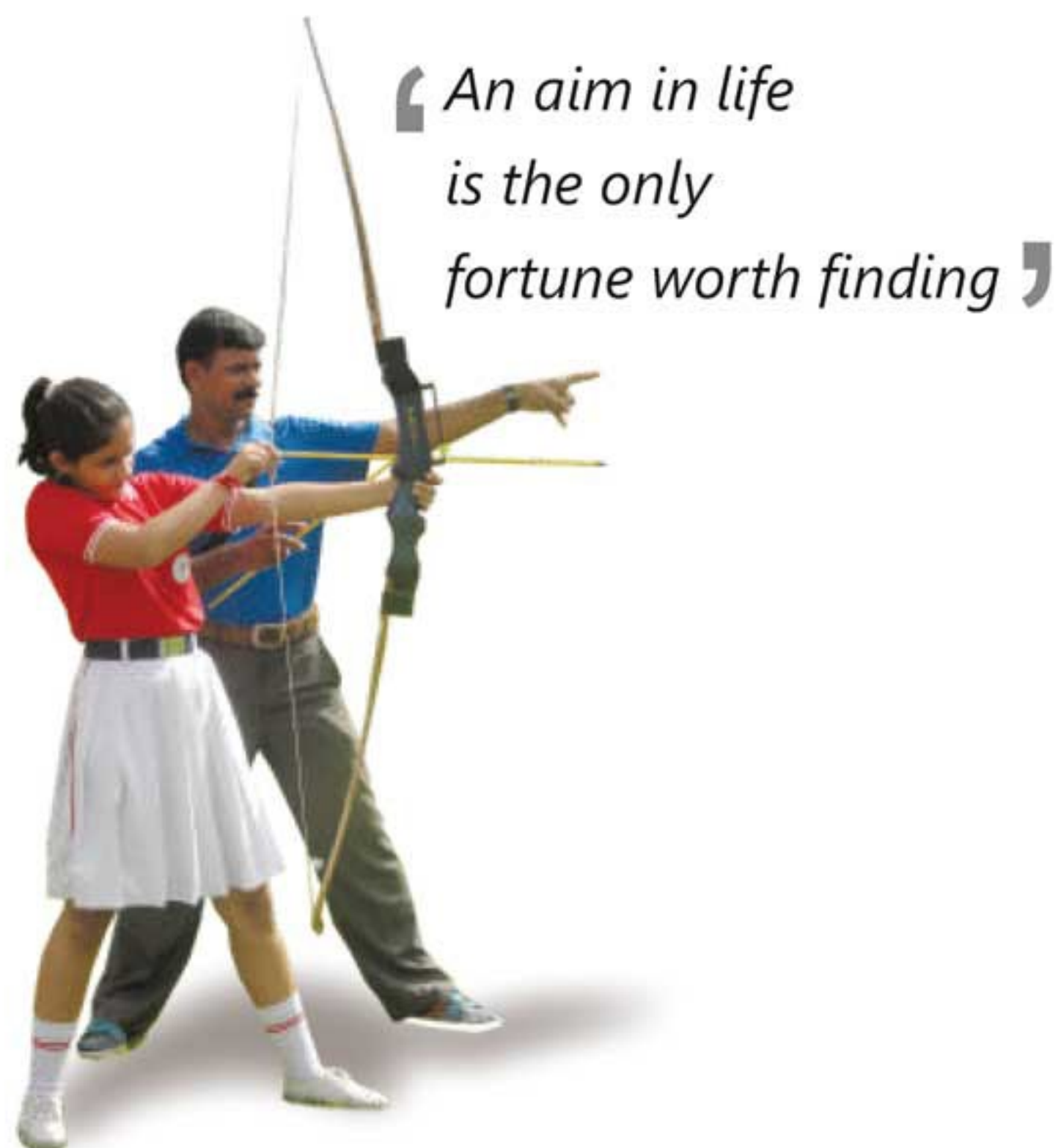
**“We are trained  
to be  
Global Citizens”**

### MIDDLE SECTION



**“We get various  
Learning  
Experiences”**





## TOPPERS IN CLASS XII RESULTS 2021-2022



**Dipanshi Tripathi**  
95.2%



**Ritish Srivastava**  
95.2%



**Saumya Rawat**  
91.2%



**Krishna Samrat**  
89.2%



**Khushi Gupta**  
88.6%

## TOPPERS IN CLASS X RESULTS 2021-2022



**Sai Shree**  
97.2%



**Aditi Dwivedi**  
96.6%



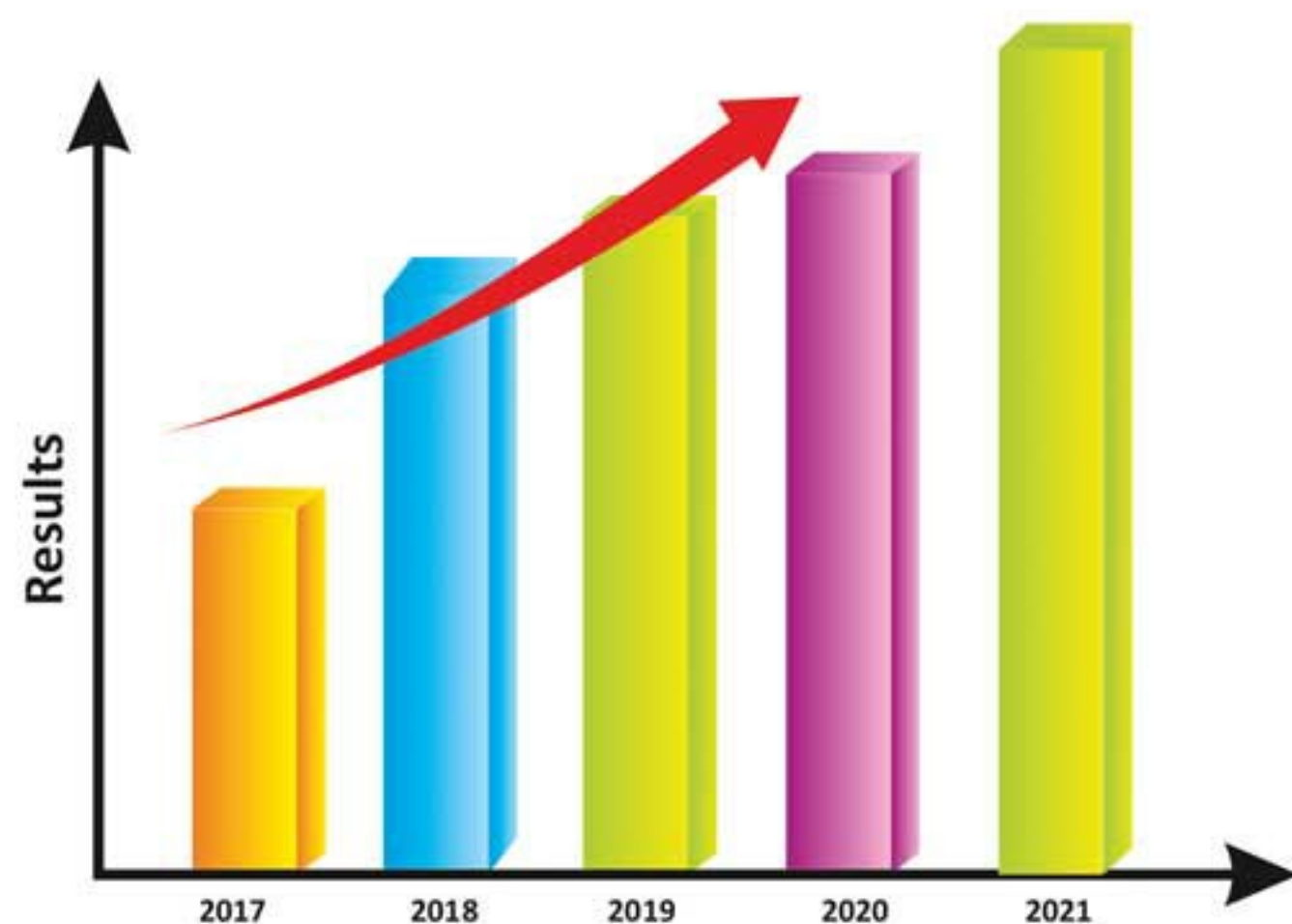
**Akshara Gupta**  
96%



**Sugandha Mishra**  
96%



**Ishita Singh**  
93.8%







***Glimpses of Activities  
at  
Mount Litera Zee School***







*Glimpses of Activities  
at  
Mount Litera Zee School*

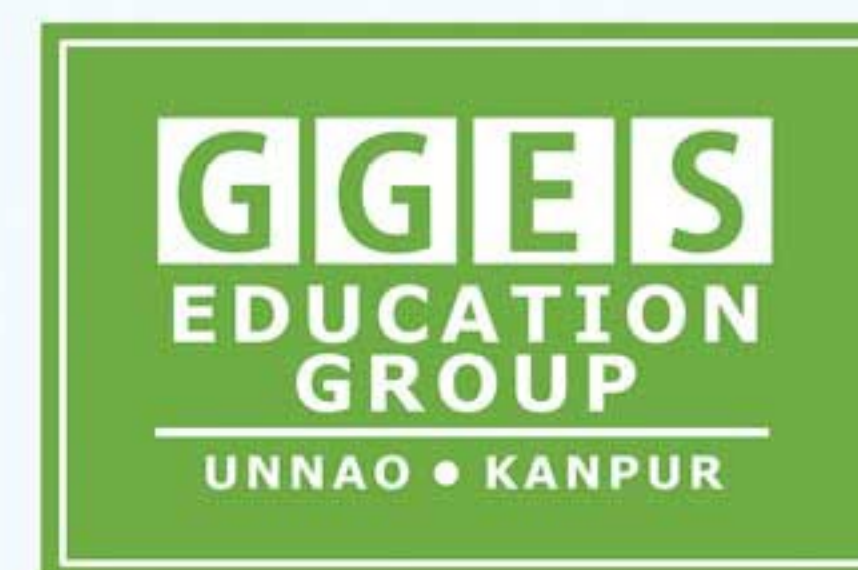




## LOCATION MAP



**Run By**



www.ggesgroup.com • +91 9971-496-497 | +91 9792-909-666